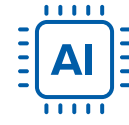


# HUMANS VS. AI

## ON THE MANUFACTURING SHOPFLOOR



### Speed

Slower at data analysis but fast with intuitive decisions

Quickly processes massive data and makes decisions in real-time

### Accuracy

Prone to fatigue-related errors in repetitive tasks

High precision in repetitive tasks like defect detection

### Adaptability

Exceptional adaptability to new or unexpected conditions

Limited to training data; struggles with outliers or novel situations

### Pattern Recognition

Struggles with large datasets, excels seeing unusual patterns in context

Excellent at identifying patterns in large datasets

### Context Awareness

Strong situational awareness and ability to infer complex contexts

Lacks contextual understanding beyond programmed parameters

### Learning Capability

Learns from experience, often intuitively

Requires retraining for new tasks or environments

### Cost Efficiency

Lower initial cost but ongoing expenses for training, salaries and benefits

Upfront investment but quick ROI due to automation

### Ethics and Judgment

Can apply ethical reasoning and nuanced decision-making

Cannot exercise moral or ethical judgment; follows programmed rules

### Innovation

Highly creative and innovative, often introducing new solutions

Limited creativity; excels at optimization but not ideation

### Collaboration

Excels in dynamic, collaborative team settings

Works effectively in structured, rule-based environments

### Durability

Needs breaks to maintain performance and health

Can operate continuously without fatigue